

Category 3 Consultation (High Conservation Values) Forest Stewardship Council® (FSC®) Controlled Wood Risk Assessment

KBM Resources Group is undertaking a consultation process with interested parties to address a mandatory requirement for all forest product facilities certified to the Forest Stewardship Council (FSC) Controlled Wood (CW) Standard. Attached you will find a summary of a Risk Assessment carried out by KBM for the supply area of Northwestern Ontario and Northern Minnesota. The complete risk assessment report and comment template can be found at www.kbm.ca.

Certification to the FSC Controlled Wood standard (*Requirements for Sourcing FSC Controlled Wood* or [FSC-STD-40-005 V3-1](#)) can be very important to business success and product marketability for forest product companies as it allows them to demonstrate that measures are in place to prevent any of their wood supply coming from unacceptable sources defined by the following categories:

1. *Illegally harvested forests;*
2. *Forests harvested in violation of traditional and civil rights;*
3. *Forests in which high conservation values are threatened;*
4. *Forests that are being converted to plantations or non-forest use; or*
5. *Forests in which genetically modified trees are planted.*

To maintain FSC CW certification forest products companies must have a Risk Assessment undertaken and ensure measures are in place to ensure low risk supply for each of the five categories above. Accordingly, KBM has undertaken a FSC Risk Assessment for the area that spans Northwestern Ontario and Northern Minnesota. We have concluded that the defined wood supply area is “low risk” for all five FSC categories. There is, however, a requirement for stakeholder consultation regarding Category 3.

Our Risk Assessment rationalizes that any forest operation threat to High Conservation Values (Category 3) is ‘low risk’ due to the strong regulatory forest management requirements in place, and the extensive protected areas network. We are seeking your comments, feedback and /or support to help us to validate, improve and finalize the Risk Assessment so that it is as complete as it can be. The area applicable to this Risk Assessment, called the Supply Area, is mapped (Figure 1) and falls within the following ecoregions¹: Midwestern Canadian Shield forests (NA0609), Central Canadian Shield forests (NA0602) and Western Great Lakes forests (NA0416).

The consultation requirements are laid out by FSC in the Controlled Wood Standard (Annex B of the FSC-STD-40-005 V3-1). You have been identified as a potential interested or affected party and are receiving this letter as per the requirements of the FSC Controlled Wood Standard consultation requirements.

¹ As defined by World Wildlife Fund. URL: <https://www.worldwildlife.org/biomes>



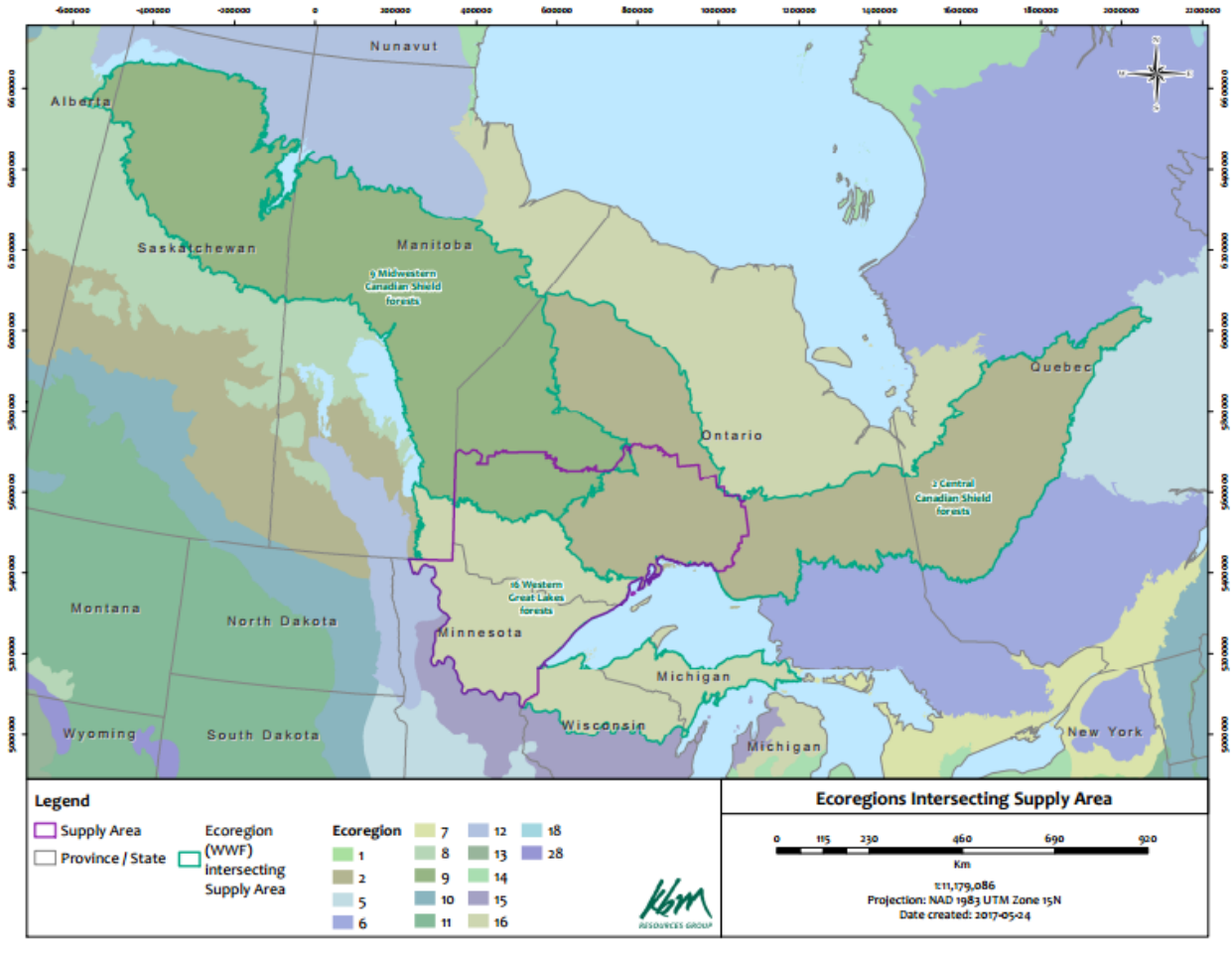


Figure 1. Supply Area map outlining geographic scope of Risk Assessment.

STAKEHOLDER REVIEW

- The consultation is open for six weeks, from June 20, 2017 to July 31, 2017.
- The complete Risk Assessment report and comment template can be found at: www.kbm.ca.
- For a discussion or meeting to assist in providing input in an alternative format than the comment template, please contact Triin Hart at 807-345-5445 ext. 246 or email thart@kbm.ca.

PROVIDING FEEDBACK

Comments are requested in writing. In an effort to ensure consistency in our evaluation and response, please use the template provided and submit by email to: thart@kbm.ca or by mail: FSC Risk Assessment, c/o Triin Hart, KBM Resources Group, Thunder Bay, ON P7B 5L5 or fax attention of Triin Hart to 807-345-5858.

As per Section 1.4 of the Annex B, within 60 days following the end of the consultation process, KBM will respond to all stakeholders who participated in the consultation process explaining how their comments were taken into consideration.

ANONYMITY

A summary of the stakeholder consultation and comments received will be made publicly available. Verbatim comments will only be published with prior consent from the stakeholder and will not be associated with stakeholder names.

Thank you in advance for your consideration and input. Please feel free to contact Triin Hart at 807-345-5445 ext. 246 with any concerns or questions.

Regards,

KBM Resources Group
Thunder Bay, Ontario
www.kbm.ca

About KBM Resources Group

KBM Resources Group is an environmental consulting firm based out of Thunder Bay, Ontario. The company operates in the resource management sector, with extensive experience providing independent forest auditing and certification services to clients across Ontario. KBM's certification work includes assessment against Forest Stewardship Council (FSC®) standards, which is a system that assures consumers that wood comes from well-managed forests (see <https://ca.fsc.org> for more information).

